

## Thiele Series 4600 AeroSeal<sup>®</sup> Bag Closer



### Features

- Electronic heater controls with LED readout for easy adjustment
- Crank style elevating mechanism that promotes fast height adjustment
- Sealed ball bearings that require no lubrication
- Removable heater nozzle and folder blade for simple, tool-less clean-out
- Variable A.C. drive

# Thiele Series 4600 AeroSeal® Bag Closer

The Thiele Series 4600 AeroSeal® Bag Closer is designed to close stepped-end multi-wall bags after the bag has been filled with product. Once filled, the bag closer activates the pre-applied hot melt adhesive on the bags and folds over the top to seal the closure.

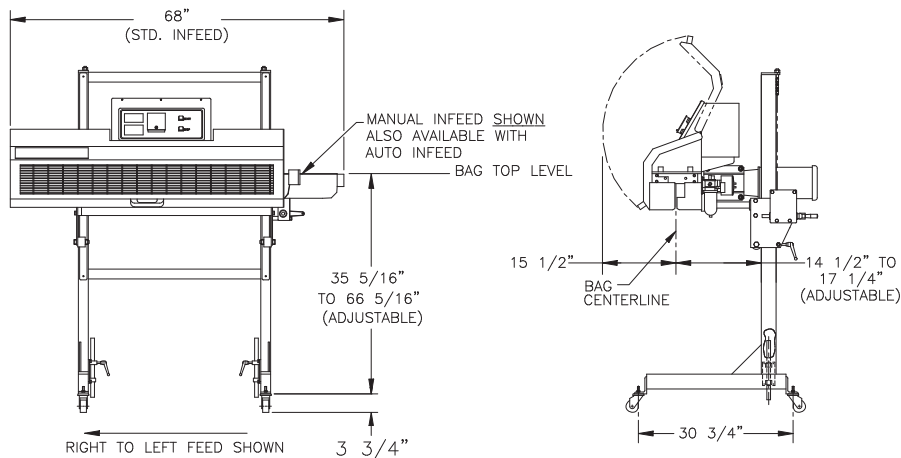
As the filled bag moves along a conveyor, the bag top is manually or automatically formed and fed into the entrance guide of the closer. V-belts then convey the bag top through the bag closer.

The bag enters between the creasing rollers to set the fold line and to fold the bag top 90 degrees. The bag enters above the hot air nozzle where hot air, under regulated pressure and temperature, is forced against the pre-applied adhesive to activate it.

Finally, the bag top passes through a series of compression rollers to compress the fold and set the adhesive.

## Key Benefits

- Roll-type bag top printer
- Casters with locking pins
- Short auto infeed (Star Series)
- Long auto infeed (7115XC Series)



## Specifications

### Production Speed

25 - 70 ft. per minute (7.6 m - 21.4 m)  
dependent on bag type and ambient conditions

### Dimensions

Length	Standard manual bag entry guide: 5 ft. 8 in. (1727.2 mm) Optional 7130 auto infeed: 6 ft. (1828.8 mm) Optional 7115 auto infeed: 6 ft. 5 in. (1955.8 mm)
Width	3 ft. 6 in. (1066.8 mm)
Height	Guard open and without casters: 5 ft. 6.25 in. - 8 ft. 5.69 in. (1682.8 mm - 2582.9 mm)  Guard open and with casters: 5 ft. 10.69 in. - 8 ft. 5.69 in. (1795.5 mm - 2582.9 mm)

### Power Requirements

Input Power	240 V, 1 phase, 50-60 Hz
Control Circuit	24 VDC
Current Draw	240 volts = 25 amps 480 volts = 15 amps (5 KVA transformer required)

### Air Requirements

Operating Pressure	5 - 8 psi (34 - 55 kPa)
Line Pressure	80 psi (551 kPa)
Air Use Per Cycle	8 standard cubic feet free air per cycle (225 liters) at 5 to 8 psi (34 - 54 kPa) operating pressure
Pressure Switch Setting	3 psi (20 kPa)
Pressure Relief Valve Setting	14 psi (96 kPa)

### Shipping Weight

1100 lbs. (499 kg)

Hayssen | Hudson-Sharp | Rose Foregrove | Sandiacre | Schib | Sionato | SYMACH | Thiele