



# THIELE 4600 AERO-SEAL<sup>®</sup> BAG SEALER

**Secure. Efficient. Proven**

Thiele bag sealing systems are engineered to deliver consistent, dependable performance in demanding applications. Designed for stepped-end multiwall paper bags, the Aero-Seal<sup>®</sup> Series 4600 provides the accuracy, ease-of-use, and throughput your production line requires. Thousands of installations worldwide demonstrate the reliability and value of the Thiele bag sealing family.

**RELIABILITY | SPEED | PERFORMANCE**

# WHY CHOOSE THIELE BAG SEALERS?

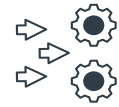
## Engineered for Productivity and Reliability



**High Throughput** — Variable-speed D.C. drive supports efficient sealing speeds across a range of bag styles and conditions.



**User-Friendly Operation** — Electronic heater controls with LED readout make setup, adjustment, and changeovers fast and simple.



**Fast Adjustments** — Crank-style elevating mechanism allows quick height changes to match your line.



**Dependable Performance** — Durable construction and sealed ball bearings minimize maintenance and downtime.



**Precise Sealing** — Regulated hot-air activation ensures consistent adhesive performance.



**Low Maintenance Design** — Removable heater nozzle and folder blade allow simple, tool-less clean-out.



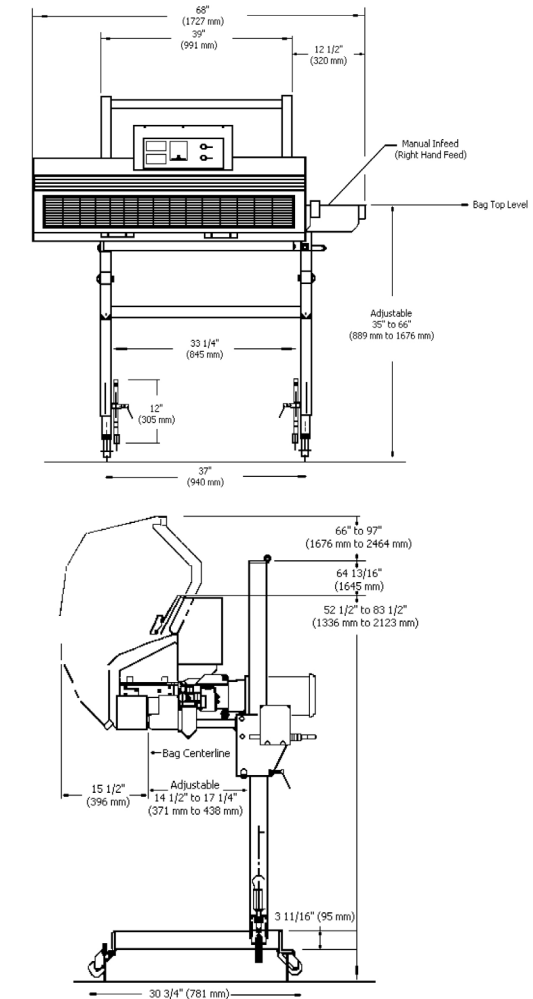
**Versatility** — Optional integrated bag-top printer available.

## Sealing Solutions That Fit Your Production.

The Thiele Series 4600 Aero-Seal® Bag Sealer is designed to close stepped-end multiwall paper bags after filling by activating pre-applied hot-melt adhesive and forming a consistent folded seal.

As filled bags move along a conveyor, the bag top is manually or automatically formed and guided into the sealer. Creasing rollers establish the fold line, while regulated hot air activates the adhesive. The bag then passes through compression rollers to set the seal — delivering dependable closure with minimal interruption to your operation.

Specifications	
<b>Production Speed</b>	
25–100 ft/min (7.6–35.7 m/min)* *Actual speed depends on bag type, adhesive, and conditions.	
<b>Dimensions</b>	
Length	67 in (1701 mm) incl. entry guide
Depth	32 in (812 mm)
Height	Up to 79 in (2006 mm), adjustable 34½–65½ in
<b>Power Requirements</b>	
Input Power	230 V, 1-phase, 60 Hz
Maximum Current	40 amps
Motor	¾ HP
5 KVA transformer required if input power is 460 V	
<b>Air Requirements</b>	
Operating Pressure	5–8 psi
Line Pressure	60 psi minimum
Air Consumption	8 SCF/min at 5–8 psi



### Applications/Industries:

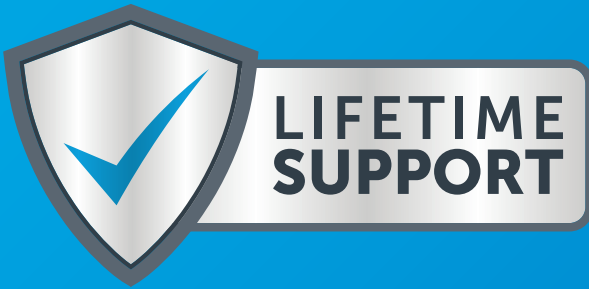
- Bulk Ingredients
- Industrial
- Food
- Agriculture
- Chemicals
- Minerals



Talk to us about your operation.  
Let's design a solution together.

# MORE THAN MACHINES. A PARTNERSHIP FOR LIFE.

At BW Packaging, we don't just build machines — we're your lifetime partner in production success. Our global service network, parts availability, training and upgrades all work together to keep your machines running for years to come.



**bw** **PACKAGING**  
a **barrywehmler** company

[bwpackaging.com](http://bwpackaging.com)