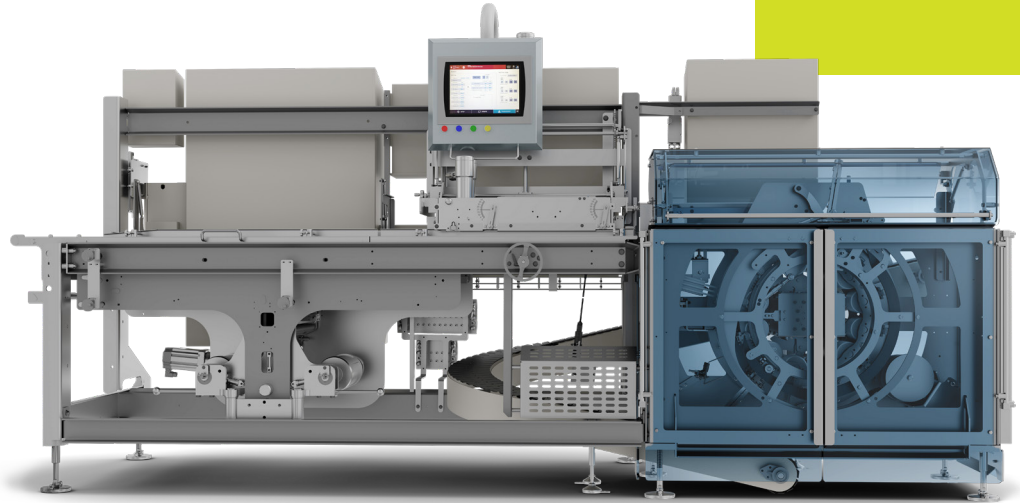


X850



Revolutionary, multi-jaw flow wrapper uniquely designed to run at exceptional speed with the highest level of seal integrity.

HIGH THROUGHPUT

- Detects and clears product jams without stopping
- Cycles up to 300ppm with over 1 second of dwell time
- Servo jaw control minimizes wear and maintenance

SIMPLIFIED OPERATION

- Independent top and bottom jaw temperature control
- Servo film edge tracking for consistent long seal
- Auto splice on the fly with pivoting spindles

INNOVATIVE DESIGN

- Patented individual ring technology with quick release jaw design
- Segmented and easily accessed single plane machined cams
- Engineered to seal various types of zippers and films including recyclable

YOUR MARKET, OUR PACKAGING SOLUTION



CHEESE



PERSONAL CARE



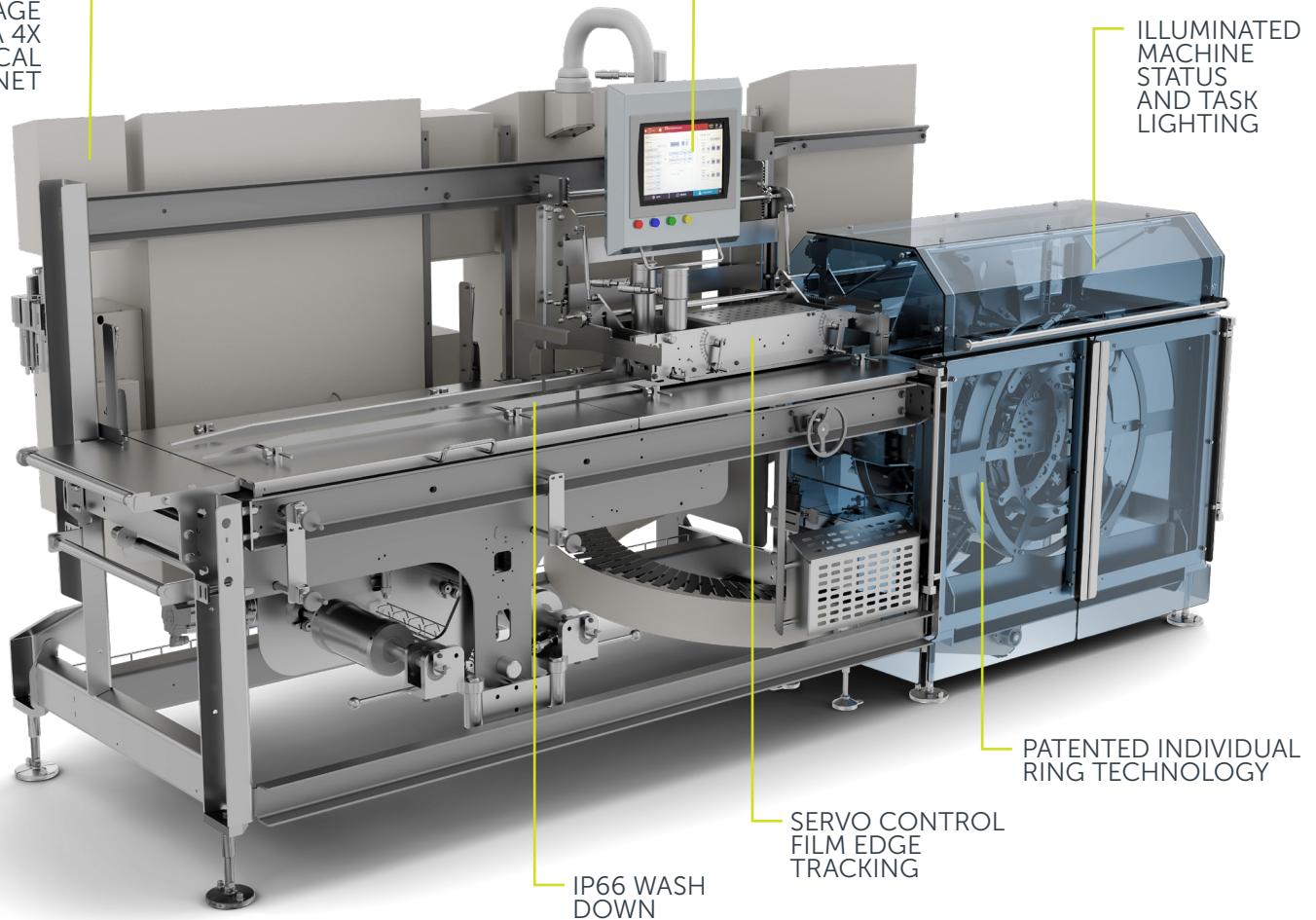
CONFECTIONARY

HAYSSEN X850

CUSTOMIZABLE RFID
LOGIN AND OPVIEW™
HMI TECHNOLOGY
STANDARD

SPLIT HIGH/
LOW VOLTAGE
NEMA 4X
ELECTRICAL
CABINET

ILLUMINATED
MACHINE
STATUS
AND TASK
LIGHTING



PATENTED INDIVIDUAL
RING TECHNOLOGY

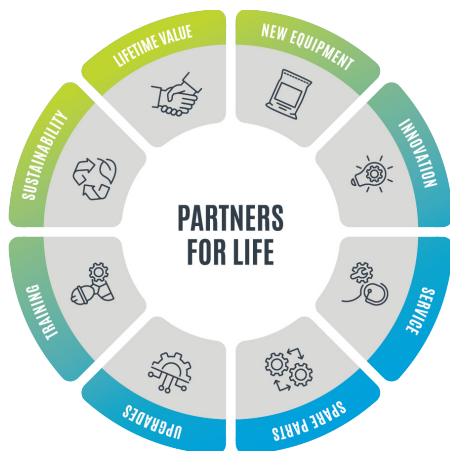
SERVO CONTROL
FILM EDGE
TRACKING

IP66 WASH
DOWN

Assembled & shipped from USA

TECHNICAL SPECIFICATIONS

- Machine height: 85" (2159mm)
- Machine length: 162" (4115mm)
- Machine width: 55" (1397mm)
- Max product height: 4" (102mm)
- Max bag length: 14" (356mm)
- Max flat bag width: 8" (203mm)
- Max reel diameter: 18" (457mm)
- Nominal bed height: 42" (1067mm)
- Electrical: 480V 3ph – 60A



YOUR SUCCESS, OUR COMMITMENT

We're more than a provider—we're your lifelong partner in success. From high quality packaging equipment and expert support to aftermarket solutions and continuous innovation, we're here to support your production every step of the way.

With a full-circle commitment to value, reliability, and growth, we help you get the most out of your investment—today and for years to come.