

HAYSSEN ISB - 330/410



High Speed Vertical Form Fill Seal Bagger

- Available as continuous or intermittent motion
- Meets highest hygienic and food safety requirements
- Open channel IP66 construction suitable for harsh wet environments
- High speed, heavy-duty, servo driven sealing jaw
- Easy, repeatable changeover of films and bag style
- Intuitive operator screens with guided changeovers
- Allen Bradley PLC, 12" HMI, motors & drives
- Metric hardware limited to 5 sizes -ease of maintenance

BW Packaging Systems represents the collective capabilities of Barry-Wehmiller packaging companies including, Accraply, BW Flexible Systems, BW Integrated Systems, Pneumatic Scale Angelus and Synerlink. Through their diverse capabilities, these companies can collectively provide everything from a single piece of equipment to fully integrated packaging systems for a wide range of industries, including: food and beverage, personal care, container manufacturing, pharmaceutical and medical devices, household products, paper products and textiles, industrial and automotive, and converting, printing and publishing. For more information, go to BWPackagingSystems.com

HAYSSEN ISB

BW Flexible Systems' Hayssen ISB brings best-in-class sanitary design, modern industrial machine intelligence, and intuitive operation to vertical form fill seal bagging.

Hygienic Design

- Sloped, open channel frame with cutouts for blowing out product.
- IP66 – High pressure washdown with chemicals. HMI, control buttons, and valve manifold are IP69K
- Stainless steel passivated with etched scaling
- Removable film rollers
- Standoffs to separate components - minimize surface to surface contact to less than 1 square inch
- Wires & airlines separated by looms
- Sliding drip pan protects jaw area for scale cleaning
- Continuous welds
- Flanged fasteners with no washers
- Swing out electrical cabinet

Intuitive -Ease of Use

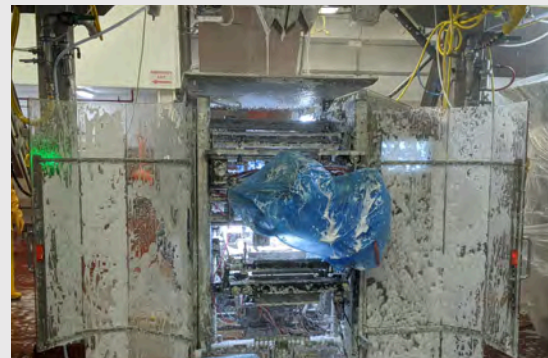
- Scaling / centerlining to ensure repeatability of bag quality
- Only 5 bolt sizes on entire machine allowing for quick maintenance.
- Large access areas, wide opening guards for maintenance
- Machine lighting indicates machine status
- Swing-out Forming Tube improves ergonomics of FTA removal
- Arc Flash compliant design with separated high & low voltage cabinets
- Motor-driven unwind
- Pneumatic film reel with quick release

Intelligent Features

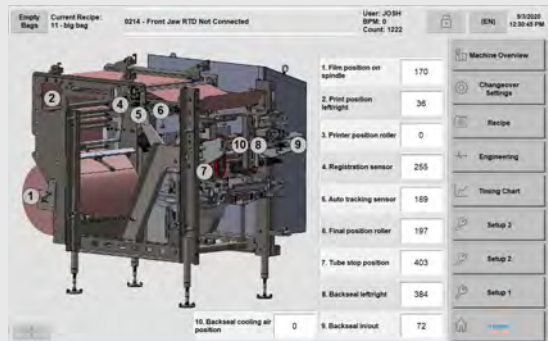
- RFID capabilities allow access-levels by role, data collection by role, or data collection by person
- Guided step by step changeover
- Secondary HMI option for troubleshooting guides at point of issue
- Remote monitoring and tele-assistance / diagnostics



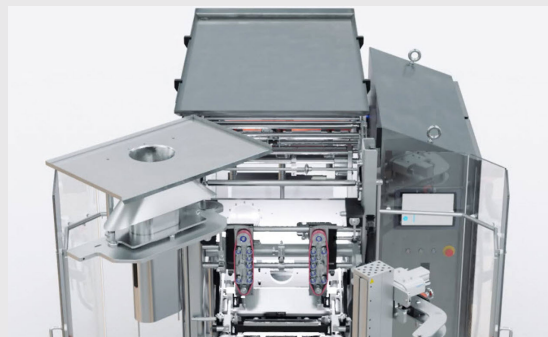
Separate low and high voltage access



IP66 High-pressure washdown including the HMI



Intuitive HMI Screen - Guided changeover



FTA Changeover Safety & Accessibility

HAYSSEN | SYMACH | THIELE