

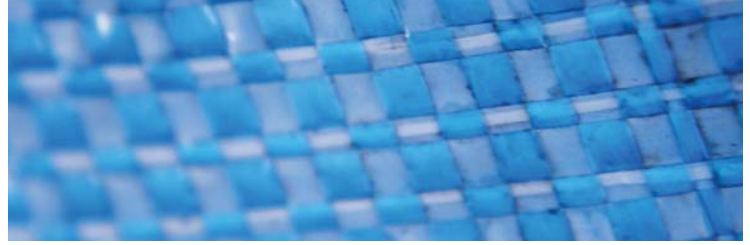
Thiele UltraStar™ Bag Filling System



Features

- Integrated scale systems
- Runs poly, polywoven, and paper bags
- Servo top and bottom bag control
- 30-second auto-recipe changeover
- Bag top registration

Thiele UltraStar™



The UltraStar is a high speed bag filling system that offers production-enhancing features for large bags that were formerly found only on packaging systems for small bags. The UltraStar system is ideal for industries where speed and line efficiencies are critical. The system can package mid to large sized bags of product at speeds up to 38 bags per minute.

Key Benefits

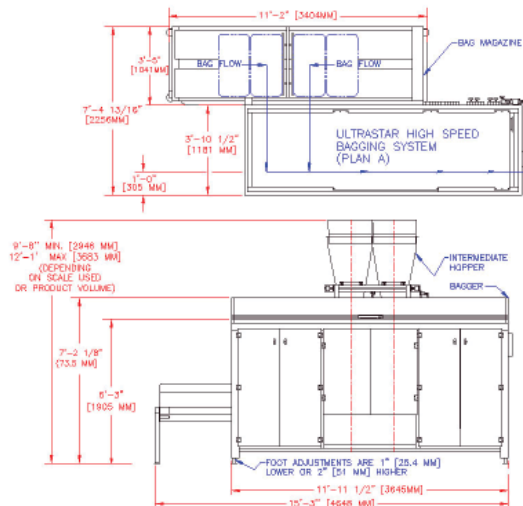
- Eliminates spillage
- Reduces downtime
- Provides easier troubleshooting
- Minimizes dusting
- Maintenance reminders

Additional Benefits

- Bar code scan automatic changeover
- VPN remote diagnostic system
- Integrated laser bag printing
- Bag deflation system
- Seals woven pinch top bags
- System 'up-time' graphic display

Industries Served

- Pet food
- Sugar
- Salt
- Seed
- Fertilizer
- Rice
- Chemical
- Animal feed



Specifications	
Production Speed	
Up to 38 bags per minute	
Bag Sizes	
Face Width	11" to 19" (279mm to 483mm)
Length	
PBOM	15" to 41" (381mm to 1041mm)
SOM	14" to 40" (355mm to 1016mm)
Poly	14" to 40" (355mm to 1016mm)
Woven Poly	14" to 40" (355mm to 1016mm)
Electrical Requirements	
Input Power	230/460V, 3 phase, 60 hz
Control Circuit	24 Volt DC from internal power supply
Current Draw	230 volt (20 amps) 460 volt (10 amps)
Air Requirements	
Operating Pressure	80 psi (5.4 atm)
Line Pressure	90 psi (6.1 atm)
Air Use per Cycle	2.0 scf (55 liters) free air per cycle
Approximate Shipping Requirements	
Bagger	4,500 lbs (2041 kg)
Bag Magazine	500 lbs (227 kg)

Hayssen | Hudson-Sharp | Rose Foregrove | Sandiacre | Schib | Sionato | SYMACH | Thiele